



# Plastic Safety Systems

## RoadQuake 2™

### Temporary Portable Rumble Strip Product Guide



Distributed by:

Download PSS  
Product Catalog.

“On the Roadway for Safety”®





# Temporary Portable Rumble Strips

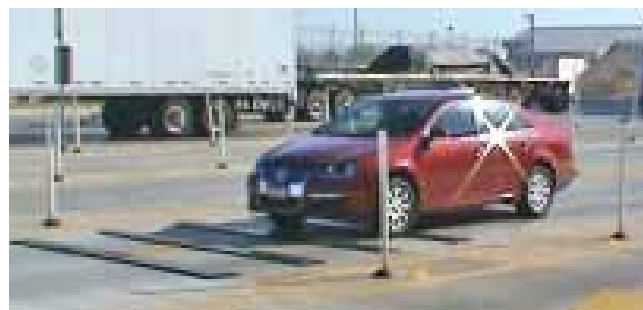
Designed to Reduce Accidents and Save Lives.

## Our Rumble Strips Alert Drivers to Changing Road Conditions.



**Ideal for work zones where daily installation and removal of the work zone is frequently required:**

- Pilot car or flagging operations
- Lane closures
- Traffic safety check-points
- Routine maintenance projects
- Paving operations



### Our Rumble Strips are:

**Temporary** - No nails or glue are needed for installation and use. Quick installation and removal, and no clean-up.

**Portable** - No installation equipment needed. A crew of 2 can install an array in minutes.

**Durable** - 3-5 year life under normal conditions. Suitable for use in rain and colder temperatures.

Visit our Rumble Strip Page.



Watch RoadQuake Videos on YouTube.



#### For Use In:

Posted Speed Limits:  
Temperatures:

#### RoadQuake 2 & 2F

75 MPH or less  
from 0 to 180° F

# RoadQuake<sup>2</sup>

Modular Temporary Portable Rumble Strip

Ergonomic handles



RoadQuake 2 is 45" long. 3 sections make 1 rumble strip, 11' long when assembled, to traverse an entire lane. Generates the same level of sound and vibration as milled strips, and higher levels than glue-down strips. Measures 45" long X 13" wide X 3/4" thick. Weighs only 35 lbs. Ideal when transport and storage space is limited. Fits in virtually any vehicle. Features beveled edges on both sides for easy installation.



RoadQuake 2 is easy to transport and store.



Assembles in minutes. No tools required.

For complete assembly instructions, see pages 4 & 5.



3 sections make 1 strip, 11' long, that traverses an entire lane.

US Patent No. 7,736,087, Other Patents Pending



Installs in minutes. No glue, adhesives or nails required. No tools or equipment needed.

Watch the YouTube RoadQuake 2 Assembly Video.



Download the PSS RoadQuake 2 Product Guide.





## How to Assemble RoadQuake 2 Sections

RoadQuake 2 is a temporary device; no glue, adhesives or other fasteners are required for installation. RoadQuake 2 simply conforms to the surface of the road.



Prior to assembly or installation, sweep areas clear of gravel and other debris that may cause strips to move.

The only tool you will need for assembly is a 4x4 piece of wood, or an object of similar size.



### Tabs and Slots:

RoadQuake 2 is ready-to-assemble. No hardware is required.

In the picture to the left, the section on the left is the "tabbed" section; the section on the right is the "slotted" section.

Note that both long edges are beveled, so that either edge can face traffic.



### The Goal of Assembly is to Properly Engage Tabs with Slots:



The channel under the tabs, shown in Picture 1...



...must engage the rod on the slotted end, shown in Picture 2.

## Assembly Steps (from our Video!)



Put the 4x4 under the slotted end of the first section.

The wood will **ELEVATE** the slotted end.

Next, pick up the second section with the tabbed end down and nameplate facing you.

Straddle or stand next to the elevated section.



**INSERT** the tabbed end into the elevated slotted section.



**KICK** the section in your hand to fully engage the channel on the rod.



Slowly **DROP** the section...



**REMOVE** the wood and...



**ENGAGE** the rod on the slotted end.

### Kicking Style

Picture 4 shows a sideways, soccer-style kick, using the instep of the foot. Straight-on, football-style is also acceptable. Simply straddle the section on the ground, insert and engage the section in hand, and kick straight-on, in football-style. Then proceed to Steps 5, 6 and 7.



**STOMP** on it, to complete the assembly.

You can now add a third section to make a full 11 foot strip that spans an entire lane.

Watch the YouTube RoadQuake 2 Assembly Video!



### Results: This....



Properly assembled sections should be smooth and flat, as shown in the picture above.

### ....Not This...



These sections have not been assembled correctly. Please repeat the assembly steps. But first, watch the video!